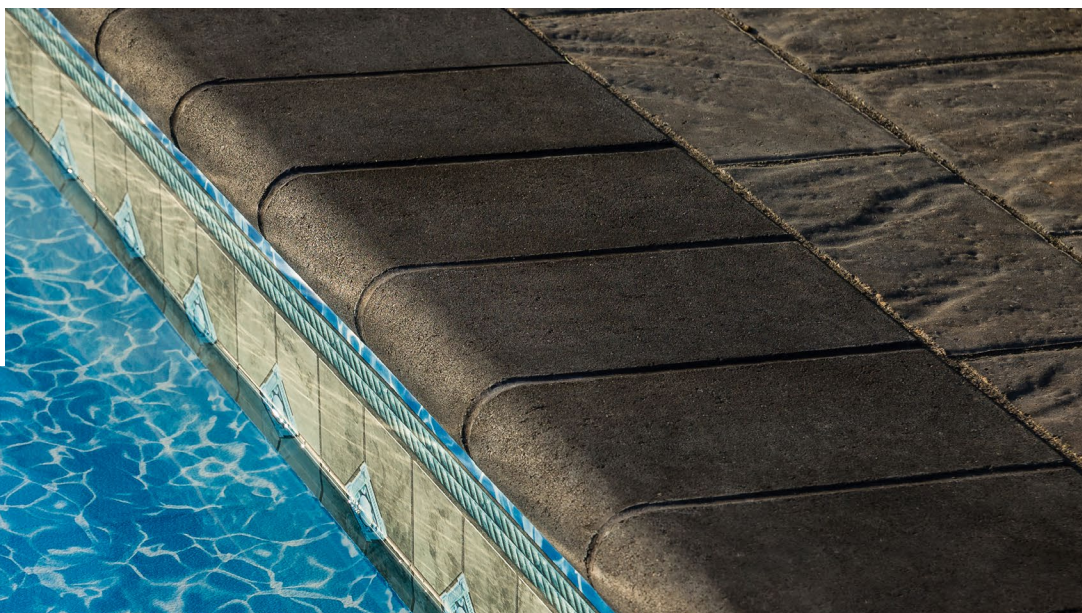




Bullnose Paver



For Pools and Seat Walls

Bullnose paver's rounded edge makes them ideal for any poolside, seat wall or step application. Bullnose is available in both smooth and tumbled varieties, allowing you to easily match the surrounding hardscape.



Patios

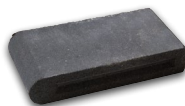


Pools



Paths

SIZES (L X W X H)

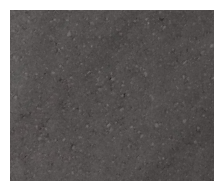


Smooth
305 x 152 x 60 mm
12 x 6 x 2.36 in



Tumbled
305 x 152 x 60 mm
12 x 6 x 2.36 in

COLOURS



Charcoal

INSTALLATION NOTES

Product available to order in full pallets only. Special order minimum quantity is 1000 sq ft. Contact your local Barkman sales representative for further details. When installing Bullnose pavers, make sure to include a 2-5mm gap between each paver. This will provide enough room for the jointing sand and make installation easier. For more in depth installation guides for specific products, visit BarkmanConcrete.com.

BUNDLE CONFIGURATIONS

DESCRIPTION	UNIT					PALLET			
	SIZE (L X W X H)		FACE AREA		WEIGHT	NO. OF UNITS	FACE AREA		WEIGHT
	MM	IN	M ²	SQ FT	LB		M ²	LNFT	LB
Roman (Tumbled)	305 x 152 x 60	12 x 6 x 2.36	0.04	0.5	13	144	21.95	72	1872
Smooth	305 x 152 x 60	12 x 6 x 2.36	0.04	0.5	13	144	21.95	72	1872