



Terrace Slab



Elevate Your Rooftop Balcony

Turn an undeveloped rooftop or a neglected patio into liveable space with Barkman's Terrace Slab. Each slab is manufactured using strict height tolerances and meets the flexural strength requirements stipulated by CSA A231.1. **Available in BC & Alberta only.**



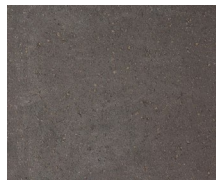
Install Terrace Slab normally or use a pedestal system for easy access to the rooftop substrate.

SIZES (L X W X H)



610 x 610 x 51 mm
24 x 24 x 2 in

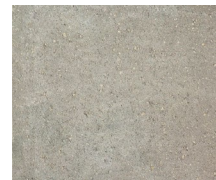
COLOURS



Charcoal



Graphite



Natural

BUNDLE CONFIGURATIONS

DESCRIPTION	UNIT					PALLET				
	SIZE (L X W X H)		FACE AREA		WEIGHT	NO. OF HORIZONTAL LAYERS	NO. OF UNITS	FACE AREA		WEIGHT
	MM	IN	M ²	SQ FT	LB			M ²	SQ FT	LB
24 x 24	610 x 610 x 51	24 x 24 x 2	0.37	4	96.13	10	20	7.44	80	1923

Steinbach Office

152 Brandt Street
Steinbach, MB R5G 0R2
T (800)-461-2278
F (204)-326-5915

Winnipeg Office

901 Gateway Road
Winnipeg, MB R2K 3L1
T (800)-342-2879
F (204)-663-4854

Calgary Office

813 McCool St. Box 1136
Crossfield, AB T0M 0S0
T (403)-946-4630
F (403)-946-4631

Vancouver Office

Port Moody, BC
T (778)-689-7670
F (604)-949-0321

Merritt Office

1132 Midday Valley Rd
Merritt, BC V1K 1M9
T (778)-661-1408

